

**Innovation Leader
DY Group**



Total Lifting Solutions

DY Company History



ABOUT DY GROUP

DY Group global company recognized for superior quality and technical skills in the world market. DY, since the foundation in 1978, has prepared the foothold for growth engine by extending new workplaces in various areas and does its utmost to develop products to customers' needs by establishing New-Biz Advanced Research Center in order to prepare against global environmental change.

DY has developed into a global company by establishing overseas branches and corporations in the U.S., Mexico, Japan, Europe, and many other countries, including production bases located in China and India, and by reinforcing global network.

As a result, DY has been verified as the top company in manufacture industry both in name and reality, growing into an export-directed company by winning a number of awards for great quality and management.

STIFF BOOM CRANE



DY produces various types of stick crane applying to high-rise buildings, subway construction, and public works, including 3 tone-size small cranes up to 20 tone-size large cranes.

Especially, DY has developed a minus undulating boom for extending the scope of stick crane's work and also has applied two telescopic booms for the first time in the field so as to solve the inconvenience of the existing booms and to allow customers to perform works more promptly.

Having outstanding durability even operable in an extremely hot or cold environment, its performance has been recognized after being used in the Antarctic King Sejong Station and UN Base in Republic of South Sudan.

Knuckle cranes useful in collecting scrap metals, waste papers, and recyclable materials satisfy customers with the optimal operating radius and operability as well as incomparably superior durability and rigidity.

DY Global Network

Korea - 81 A/S centers and 68 sales networks 5 production corporations in Iksan, Asan, Incheon, and Changwon 9 offices in Incheon, Seoul, Gyeonggi, Daejeon, Gwangju, Daegu, and Busan

DY has developed into a global company by establishing overseas branches and corporations in the U.S., Mexico, Japan, Europe, and many other countries, including production bases located in China and India, and by reinforcing global network.



Network (Overseas)

DY China
Yantai / Yancheng / Shanghai / Beijing / Chongqing / Jiangyin

DY America
Michigan / Seattle

DY Japan
Tokyo

DY India
Pune / Grugaon

DY Mexico
Nuevo Leon

DY Germany
Schwalbach

Network (Domestic)

DY Korea
DY / Iksan, Incheon
DY POWER / Changwon
DY AUTO / Asan
NANURI / Yesan
HST / Incheon

DY Crane Global Business

DY's Crane business that helps construct infrastructures continues to develop through the development of new products in which market's requirements are reflected, appropriate business strategies, and advancement into a new market. This business will serve as a global partner for successful business by enlarging the scale of export to North America, CIS, Middle East, and South-East Asia.



**Best Partner for Your Success
We Make a Difference!**



Sales Office : (Namchon-dong), 36, Namdongseo-ro, 362beon-gil, Namdong-gu, Incheon, Korea
Plant : 118, Seogam-ro 13-gil, Iksan-si, Jeollabuk-do, Korea
Tel : +82-32-810-4169 **Fax :** +82-32-810-4058

◆ This product specification could be changed by DY Group without notice to improve the quality.

Innovation Leader **DY**

DY CRANE SERIES
Total Lifting Solutions



MISSION

We contribute to the happiness of our community and the progress of society by creating exceptional value through the Right-way Management.

VISION

Perennial Great Workplace

CORE VALUE



DY INNOVATE



» Concrete Pump Truck

DY Corporation concrete-pumping vehicles are together with customers in any operating conditions and sites with a diverse lineup ranging from the 25m-class optimized for urban operating environments to the 57m-class displaying more powerful performance in large-scale sites. Also by applying the high-strength boom and outrigger boasting an excellent durability along with the hydraulic cylinder of the world best quality, customers' safe and quick operation is insured in any conditions based on the powerful performance and the durability.



» Stiff Crane

DY Corporation stick cranes used for work with high-rise buildings, train railroads and for civil construction Products are manufactured ranging from 3-ton class medium-type to 20-ton class large-type. Particularly, the minus relief boom was developed for the first time in the industry and expanded its work ranges and the 2Tele newly constructed boom was applied for the first time in the industry to alleviate inconvenience with the existing boom enabling quick operations.



» Knuckle Crane

DY Corporation knuckle crane displays its performance where needed most although it may not be readily visible in such places as recycling sites for recycled commodities including scrap metals and waste papers. It provides a great satisfaction to customers based on the best working radius, operability, excellent durability and strongness to the extent of not even permitting comparisons with any other equipment.



» Automatic Car Washing Machine

DY Corporation automatic car-washing machine are emphasizing independent washing technique and customers' convenience Various car-washing machines such as gate-type, double gate-type, tunnel-type, large-type, etc. are being supplied. Particularly, DY Premium Car Wash System, CASPA, was designed for quiet car wash while saving money with all the most advanced LOW-POWER-MODE & LOW NOISE. For maximum performance, this product applies HIGH PRESSURE PRE-CLEANING SYSTEM. You can enjoy clean and quiet car wash as well.



» Golf Cart

Golf carts developed with technology aimed at environment and future are competing confidently with globally prominent brands. Particularly, based on quality improvement through R&D, broad sales networks, It has been already recognized by many customers.

DY POWER

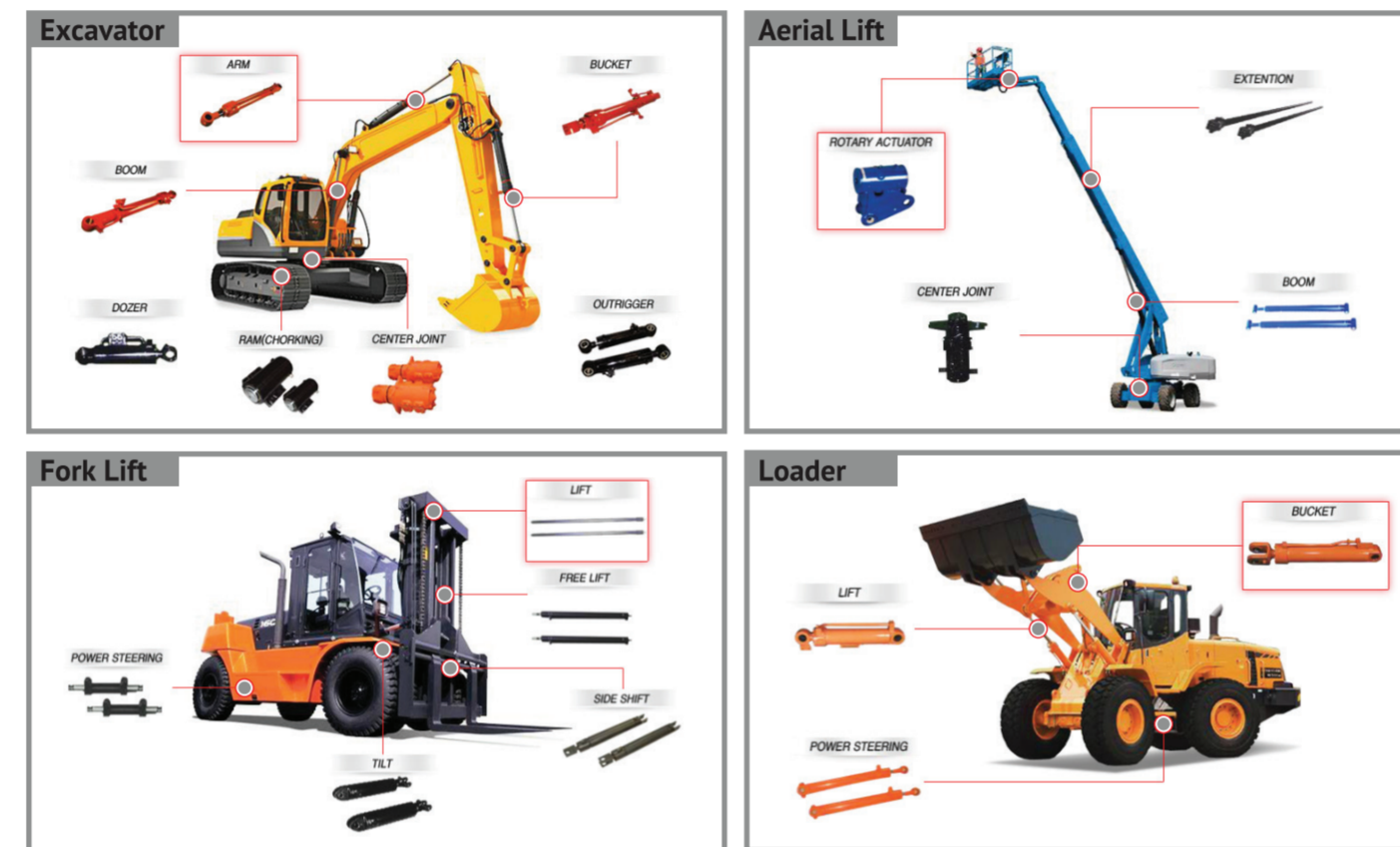
In 1978, DY POWER pioneered the production of hydraulic cylinders for construction equipment in Korea by establishing its Changwon facility. With state-of-the-art equipment, continuous Research & Development and an excellent workforce with many years' expertise, we are producing the world's top quality hydraulic cylinders.

In 2005, our hydraulic cylinder was selected as the 'World Best Product' by the Korean Government which recognizes products with top quality ratings and best technology. In 2011, we have achieved the status of 'World Class 300' which is project initiated by the Korean Government to recognize select Korean companies as world class.

Our advanced technology and high quality standards have allowed us to aggressively develop a diverse customer base during the last 3 decades. As a result, we are now supplying our cylinders to each of the world's top 10 construction equipment manufacturers, and other world-class companies.

We are aggressively investing in R&D to maintain a high level of customer satisfaction, with the goal of becoming the world's No.1 hydraulic cylinder supplier in terms of quality and market share.

» Main Products



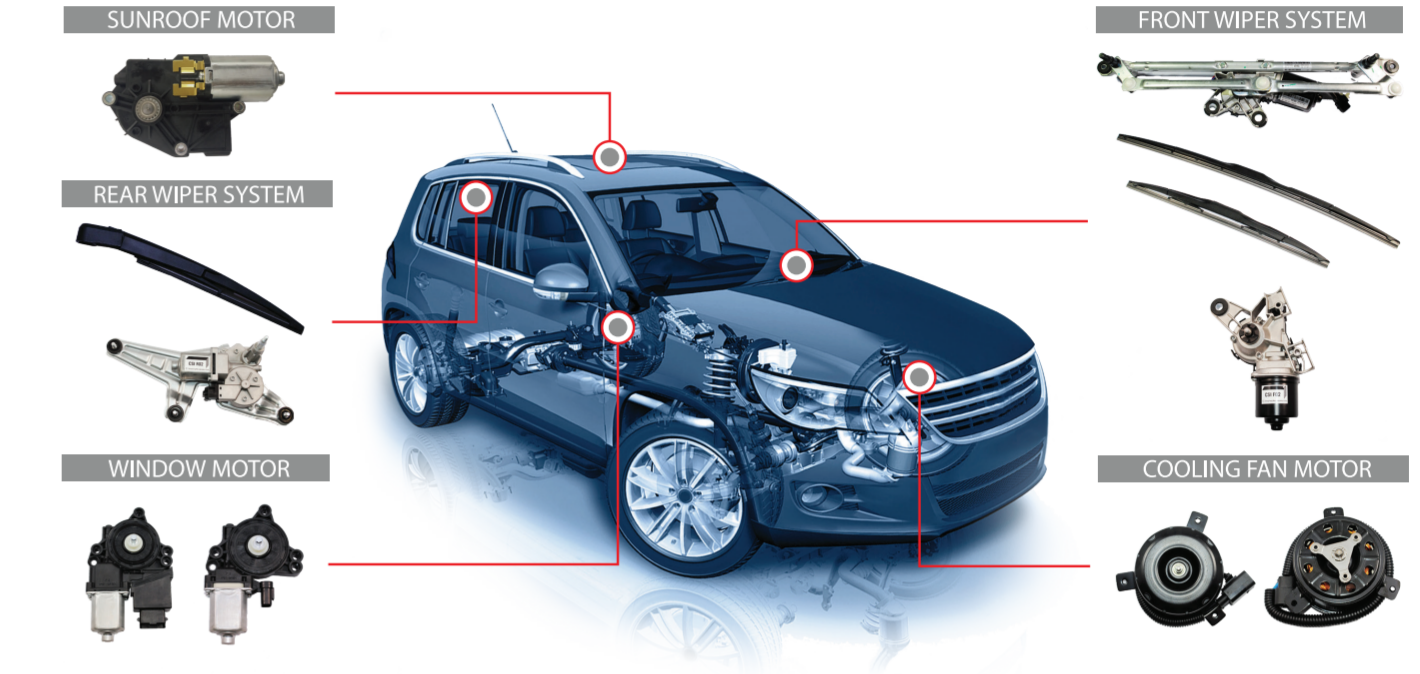
» Customers



DY AUTO

DY AUTO continuously make every effort to satisfy our customers through endless Quality and Productivity improvement together with our suppliers to become the leader in the automotive component industry. Going forward, to realize our goal of achieving 'Global Top Quality' we must focus on customer satisfaction, providing value to our stakeholders, building partnerships with our suppliers and creating an environment where our employees can fulfill their aspirations.

» Main Products



» Customers



DY CRANE SERIES

SS1414 • SS1416 • SS1924

Outstanding quality and durability coupled with various functions -
Midsized cranes



SS1416

STIFF BOOM CRANES Specifications

Category	Description	Unit	SS1414	SS1416	SS1924
Capacity	Max. Lifting Capacity	kg.m	14,000	14,000	18,000
	Max. Working Height	m	12.4	17.3	16.4
	Max. Working Radius	m	10.6	15.5	13.6
	Rated Load (★ : 6S, STD : 4S) (★ : 8S, STD : 6S)	kg / m	★7,000 / 2.0	★7,000 / 2.0	★7,400 / 2.0
			4,000 / 3.5	3,800 / 3.5	3,900 / 4.5
			2,400 / 5.9	2,100 / 5.9	2,100 / 7.6
			1,500 / 8.3	1,250 / 8.3	1,250 / 10.6
1,200 / 10.6			950 / 10.7	850 / 13.6	
Oil Pump	Rated Oil Flow Volume	l / min	65.5	65.5	78
	Oil Pressure	kgf / cm ²	210	210	210
	Oil Tank Capacity	l	90	90	120
Booms & Wires	Boom Type / Sections		Hexa / 4	Hexa / 6	Hexa / 4
	Boom Extending Speed	m / sec	7.1 / 19	11.9 / 28.6	8.9 / 28
	Boom Undulation Speed	deg / sec	78 / 12.5	78 / 12.5	80 / 15
	Wire Rope		Φ10 x 90m	Φ10 x 90m	Φ10 x 100m
	Winch Speed	m / min	14 / 4 layer	14 / 4 layer	15 / 4 layer
	Swing Angle	deg	360 Swirl	360 Swirl	360 Swirl
	Swing Speed	rpm	2.0	2.0	2.5
Outrigger	Outrigger Extend Width	Front	5.7	5.7	5.7
		Rear	4.4	4.4	4.4
	Outrigger Type	Front	Auto hydraulic	Auto hydraulic	Auto hydraulic
		Rear	Auto hydraulic	Auto hydraulic	Auto hydraulic
Safety Device	Optional device (Overload limiter, Over winding device, Alarm device, Hook fixing device) Emergency switch, Swing brake, Winch brake, Counter balance valve, Pilot check valve				

Optional Device

Hook Fixing Device



AML System for Safety Device



SS1414

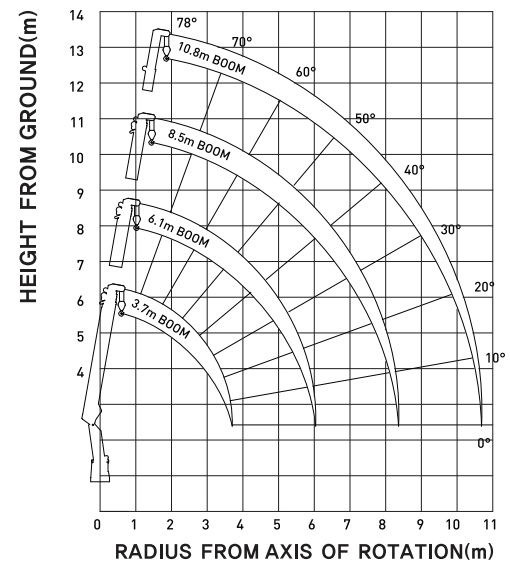


SS1414

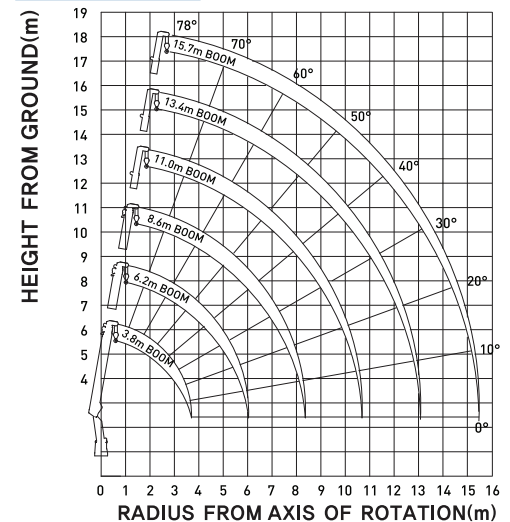


WORKING RANGE DIAGRAM

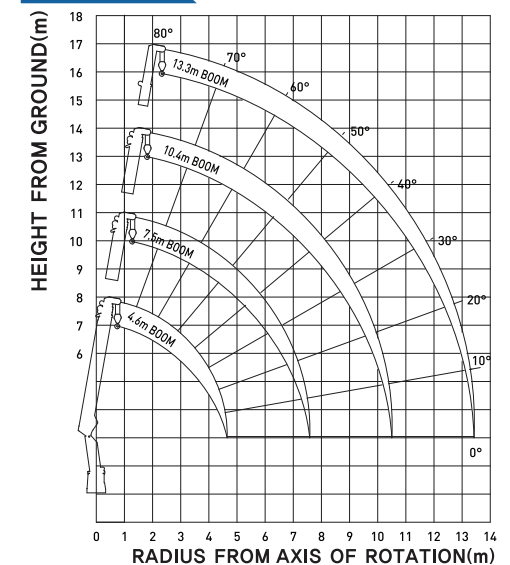
SS1414



SS1416



SS1924



Sales Office : (Namchon-dong), 36, Namdongseo-ro, 362beon-gil, Namdong-gu, Incheon, Korea

Plant : 118, Seogam-ro 13-gil, Iksan-si, Jeollabuk-do, Korea

❖ This product specification could be changed by DY Group without notice to improve the quality.

DY CRANE SERIES

SS1926 • SS1926 II • SS1956 ACE

Splendid performance and most widely used -
Midsized cranes



SS1956 ACE

STIFF BOOM CRANES Specifications

Category	Description	Unit	SS1926	SS1926 II	SS1956 ACE
Capacity	Max. Lifting Capacity	kg.m	19,000	15,000	18,000
	Max. Working Height	m	22.7	21.9	21.9
	Max. Working Radius	m	19.8	19	19
	Rated Load (★ : 6S, STD : 4S)	kg / m	★7,400 / 2.0	★7,000 / 2.0	★8,000 / 2.0
			3,900 / 4.7	3,550 / 4.5	4,050 / 4.5
			2,100 / 7.7	1,750 / 7.4	2,100 / 7.4
			1,250 / 10.7	1,050 / 10.3	1,300 / 10.3
850 / 13.7			750 / 13.2	950 / 13.2	
Oil Pump	Rated Oil Flow Volume	l / min	78	78	78
	Oil Pressure	kgf / cm ²	210	210	210
	Oil Tank Capacity	l	120	120	120
Booms & Wires	Boom Type / Sections		Hexa / 6	Hexa / 6	Hexa / 6
	Boom Extending Speed	m / sec	15.1 / 36	15.1 / 35	15.1 / 35
	Boom Undulation Speed	deg / sec	80 / 17	80 / 19	80 / 19
	Wire Rope		Φ10 x 100m	Φ10 x 100m	Φ10 x 100m
	Winch Speed	m / min	14 / 4 layer	14 / 4 layer	14 / 4 layer
	Swing Angle	deg	360 Swirl	360 Swirl	360 Swirl
	Swing Speed	rpm	2.5	2.0	2.0
Outrigger	Outrigger Extend Width	Front	5.7	5.7	5.7
		Rear	4.4	4.4	4.4
	Outrigger Type	Front	Auto hydraulic	Auto hydraulic	Auto hydraulic
		Rear	Auto hydraulic	Auto hydraulic	Auto hydraulic
Safety Device	Optional device (Overload limiter, Over winding device, Alarm device, Hook fixing device) Emergency switch, Swing brake, Winch brake, Counter balance valve, Pilot check valve				

Optional Device

Hook Fixing Device



Cabin



Rotator Type Front Outrigger

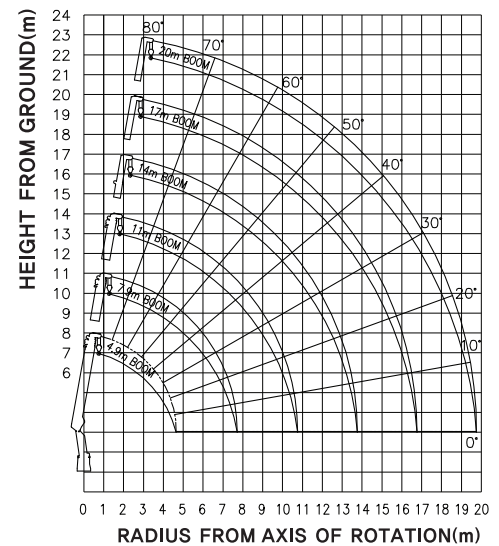


Top Seat Increased Convenience

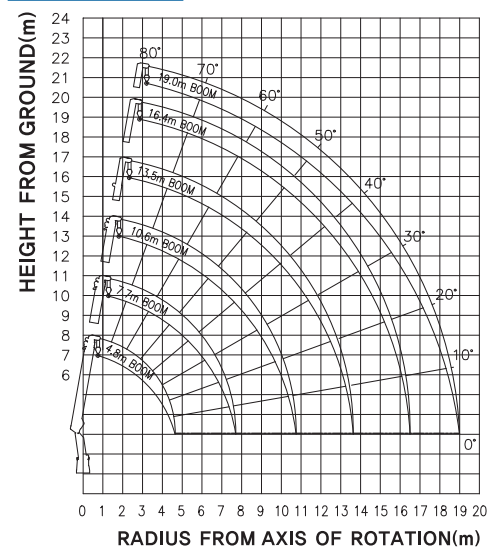


WORKING RANGE DIAGRAM

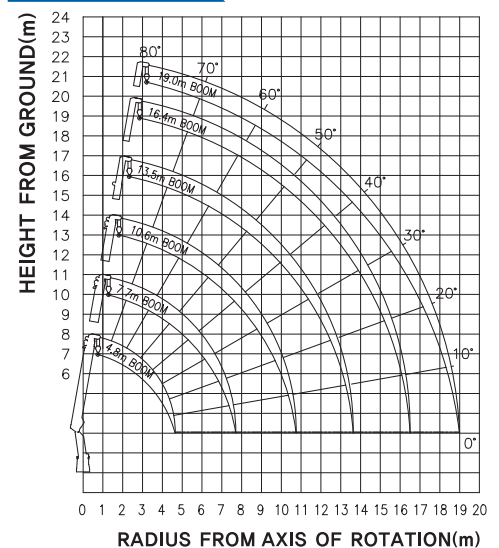
SS1926



SS1926 II



SS1956 ACE



Sales Office : (Namchon-dong), 36, Namdongseo-ro, 362beon-gil, Namdong-gu, Incheon, Korea
Plant : 118, Seogam-ro 13-gil, Iksan-si, Jeollabuk-do, Korea

❖ This product specification could be changed by DY Group without notice to improve the quality.

DY CRANE SERIES

SS1966 · SS2036 · SS2037

Outstanding lifting capacity based on cutting-edge technology -
Midsized cranes

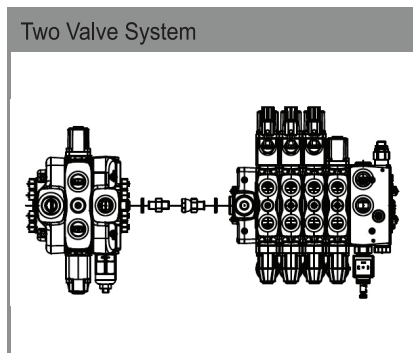


SS2037

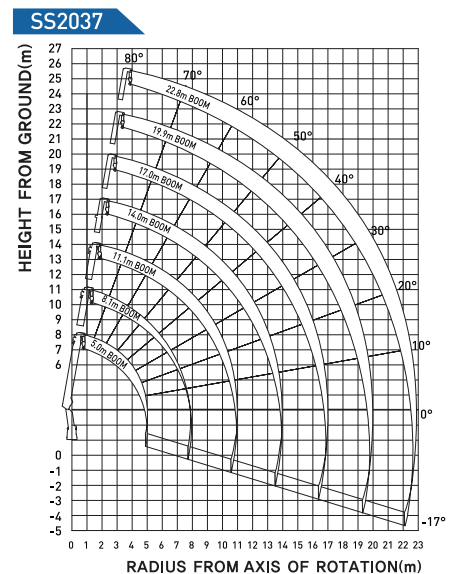
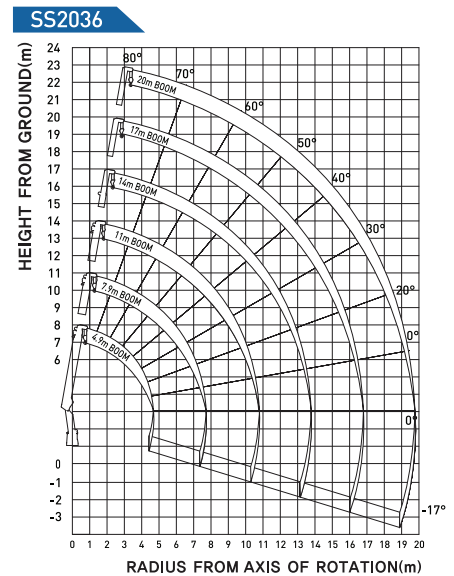
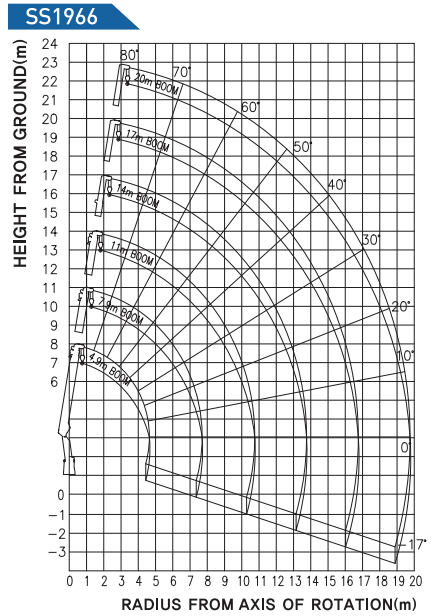
STIFF BOOM CRANES Specifications

Category	Description	Unit	SS1966	SS2036	SS2037
Capacity	Max. Lifting Capacity	kg.m	19,000	19,000	19,000
	Max. Working Height	m	22.7	22.7	25.6
	Max. Working Radius	m	19.8	19.8	22.6
	Rated Load (★ : 6S, STD : 4S) (★ : 8S, STD : 6S)	kg / m	★8,000 / 2.0	★8,000 / 2.0	★8,000 / 2.0
			3,900 / 4.7	3,900 / 4.7	3,500 / 4.7
			2,100 / 7.7	2,100 / 7.7	1,800 / 7.8
			1,250 / 10.7	1,250 / 10.7	1,000 / 10.8
			850 / 13.7	850 / 13.7	750 / 13.8
600 / 16.8			600 / 16.8	530 / 16.7	
400 / 19.8	400 / 19.8	380 / 19.6			
				280 / 22.6	
Oil Pump	Rated Oil Flow Volume	l / min	80	78	78
	Oil Pressure	kgf / cm ²	210	210	210
	Oil Tank Capacity	l	170	170	170
Booms & Wires	Boom Type / Sections		Hexa / 6	Hexa / 6	Hexa / 7
	Boom Extending Speed	m / sec	15.1 / 36	15.1 / 36	17.8 / 36
	Boom Undulation Speed	deg / sec	-17~80 / 19	-17~80 / 19	-17~80 / 19
	Wire Rope		Φ10 x 100m	Φ10 x 100m	Φ10 x 100m
	Winch Speed	m / min	14 / 4 layer	14 / 4 layer	15 / 4 layer
	Swing Angle	deg	360 Swirl	360 Swirl	360 Swirl
	Swing Speed	rpm	2.5	2.5	2.5
Outrigger	Outrigger Extend Width	Front	6.1	6.1	6.1
		Rear	4.4	4.4	4.4
	Outrigger Type	Front	Auto hydraulic	Auto hydraulic	Auto hydraulic
		Rear	Auto hydraulic	Auto hydraulic	Auto hydraulic
Safety Device	Optional device (Overload limiter, Over winding device, Alarm device, Hook fixing device) Emergency switch, Swing brake, Winch brake, Counter balance valve, Pilot check valve				

Optional Device



WORKING RANGE DIAGRAM



Sales Office : (Namchon-dong), 36, Namdongseo-ro, 362beon-gil, Namdong-gu, Incheon, Korea
 Plant : 118, Seogam-ro 13-gil, Iksan-si, Jeollabuk-do, Korea

❖ This product specification could be changed by DY Group without notice to improve the quality.

DY CRANE SERIES

SS2724 · SS2725 · SS2725LB

Superior operating efficiency -
Large size cranes



SS2725LB

STIFF BOOM CRANES Specifications

Category	Description	Unit	SS2724	SS2725	SS2725LB
Capacity	Max. Lifting Capacity	kg.m	29,000	29,000	29,000
	Max. Working Height	m	17.9	20.8	23.2
	Max. Working Radius	m	14.5	17.6	20.2
	Rated Load (★ : 6S, STD : 4S) (★ : 8S, STD : 6S)	kg / m	★12,000 / 2.0	★12,000 / 2.0	★12,000 / 2.0
			5,600 / 5.0	5,600 / 5.0	5,500 / 5.4
			3,250 / 8.2	3,250 / 8.2	2,900 / 9.1
			2,350 / 11.3	2,350 / 11.3	1,850 / 12.8
1,700 / 14.5			1,700 / 14.5	1,250 / 16.5	
-	1,100 / 17.6	950 / 20.2			
-	-	-			
Oil Pump	Rated Oil Flow Volume	l / min	90 x 90	90 x 90	51
	Oil Pressure	kgf / cm ²	210	210	210
	Oil Tank Capacity	l	200	200	200
Booms & Wires	Boom Type / Sections		Hexa / 4	Hexa / 5	Hexa / 5
	Boom Extending Speed	m / sec	12.7 / 30	12.7 / 30	14.8 / 35
	Boom Undulation Speed	deg / sec	78 / 18	78 / 18	78 / 18
	Wire Rope		Φ12.5 x 100m	Φ12.5 x 100m	Φ12.5 x 100m
	Winch Speed	m / min	30 / 1 layer	30 / 1 layer	7.5 / 4 layer
	Swing Angle	deg	360 Swirl	360 Swirl	360 Swirl
	Swing Speed	rpm	2.5	2.5	2.5
Outrigger	Outrigger Extend Width	Front	6.2	6.2	6.2
		Rear	5.36	5.36	5.36
	Outrigger Type	Front	Auto hydraulic	Auto hydraulic	Auto hydraulic
		Rear	Auto hydraulic	Auto hydraulic	Auto hydraulic
Safety Device	Optional device (Overload limiter, Over winding device, Alarm device, Hook fixing device) Emergency switch, Swing brake, Winch brake, Counter balance valve, Pilot check valve				

Optional Device

Cabin



Extra Winch / STD(X)



H-Type Long Front Outrigger

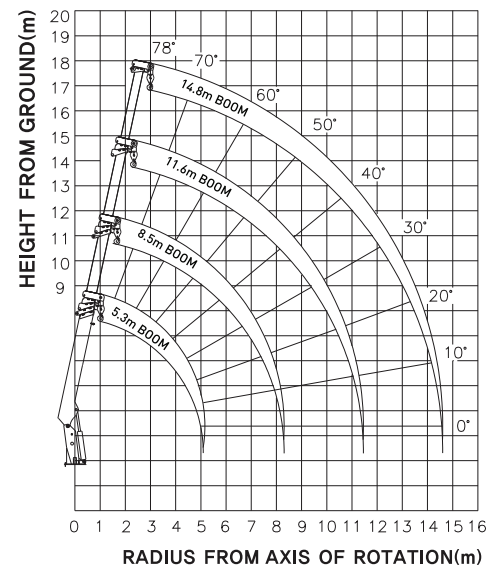


Two Derrick Cylinders (Basic)

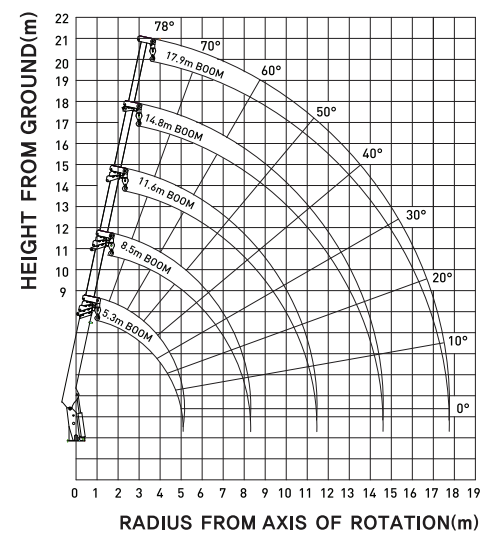


WORKING RANGE DIAGRAM

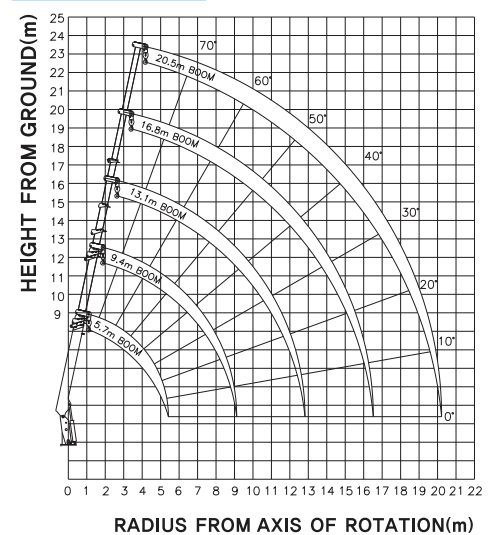
SS2724



SS2725



SS2725LB



Sales Office : (Namchon-dong), 36, Namdongseo-ro, 362beon-gil, Namdong-gu, Incheon, Korea
Plant : 118, Seogam-ro 13-gil, Iksan-si, Jeollabuk-do, Korea

◆ This product specification could be changed by DY Group without notice to improve the quality.

DY CRANE SERIES

SS3504 • SS3506

Powerful and high performance -
Large size cranes



SS3506

STIFF BOOM CRANES Specifications

Category	Description	Unit	SS3504	SS3506
Capacity	Max. Lifting Capacity	kg,m	45,000	45,000
	Max. Working Height	m	19.6	28.7
	Max. Working Radius	m	17.2	25.2
	Rated Load (★ : 6S, STD : 4S) (★ : 8S, STD : 6S)	kg / m	★15,000 / 2.0	★15,000 / 2.0
			7,500 / 6.0	7,500 / 6.0
			4,000 / 9.9	4,000 / 9.9
2,500 / 13.7			2,500 / 13.7	
			1,750 / 17.6	1,750 / 17.6
			-	1,300 / 21.4
			-	1,000 / 25.3
Oil Pump	Rated Oil Flow Volume	l / min	126 x 126	113.5 x 113.5
	Oil Pressure	kgf / cm ²	210	210
	Oil Tank Capacity	l	250	250
Booms & Wires	Boom Type / Sections		Hexa / 4	Hexa / 6
	Boom Extending Speed	m / sec	19.2 / 48	19.2 / 48
	Boom Undulation Speed	deg / sec	80 / 23	80 / 23
	Wire Rope		Φ14 x 100m	Φ14 x 100m
	Winch Speed	m / min	30 / 1 layer	7.5 / 4 layer
	Swing Angle	deg	360 Swirl	360 Swirl
	Swing Speed	rpm	2.0	2.0
Outrigger	Outrigger Extend Width	Front	7	7
		Rear	5.36	5.36
	Outrigger Type	Front	Auto hydraulic	Auto hydraulic
		Rear	Auto hydraulic	Auto hydraulic
Safety Device	Optional device (Overload limiter, Over winding device, Alarm device, Hook fixing device) Emergency switch, Swing brake, Winch brake, Counter balance valve, Pilot check valve			

Optional Device

Two Derrick Cylinders (Basic)



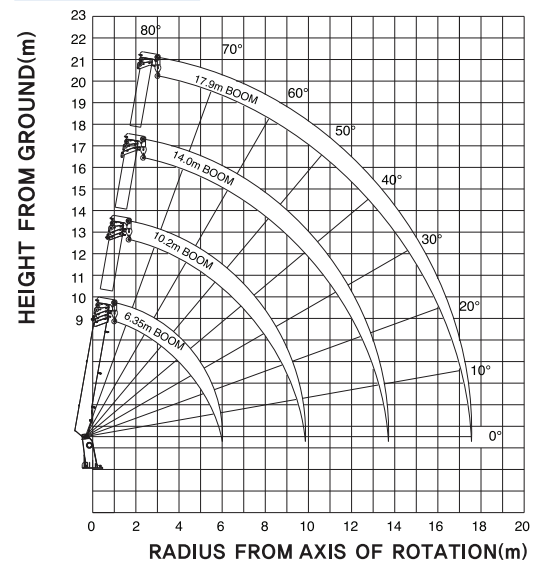
Extra Winch



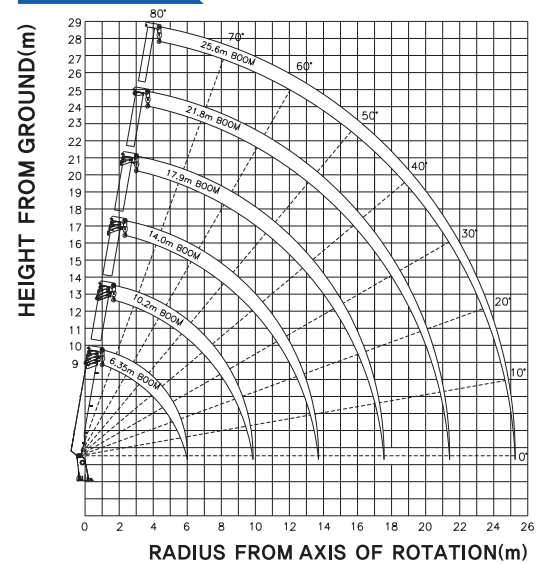
SS3506

WORKING RANGE DIAGRAM

SS3504



SS3506



Sales Office : (Namchon-dong), 36, Namdongseo-ro, 362beon-gil, Namdong-gu, Incheon, Korea
Plant : 118, Seogam-ro 13-gil, Iksan-si, Jeollabuk-do, Korea

◆ This product specification could be changed by DY Group without notice to improve the quality.

DY KNUCKLE CRANE SERIES

SSN2200 II · SSN2800 · SSN3000

Perfect operation in recycling work place -

Knuckle cranes



SSN2200 II



SSN2800



Best-in-class Operating Radius(8m)



Enlarged Capacity for Outrigger Valve

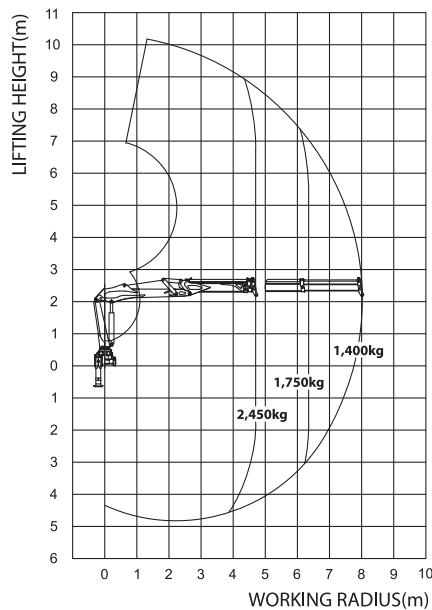
KNUCKLE BOOM CRANES Specifications

Category		SSN2200 II	SSN2800	SSN3000
Max. lift capacity	ton.m	12.0	13.0	15.0
Max. work height	m	11.3	11.8	12.7
Max. work radius	m	8.0	8.5	9.0
Rate flow rate	cc/rev	63	63	80
Rated pressure	kg/cm ²	250	250	250
Oil tank capacity	l	170	170	200
Boom type	-	Hexaogonal Box	Hexaogonal Box	Hexaogonal Box
Boom stages	-	4 stage deflection	4 stage deflection	4 stage deflection
Extension boom speed	m/sec	3.3 / 6.5	3.3 / 6.5	3.3 / 6.5
Main boom acting angle/speed	°/sec	-35 ~ 78 / 10.5	-35 ~ 80 / 10.5	-38 ~ 76 / 11
Outer boom acting angle/speed	°/sec	145 / 8	145 / 8	145 / 8
Rotating angle	°	415	415	415
Rotating speed	°/sec	35	35	35
Lift weight and distance	kg/m	3,950 / 2.6	4,250 / 3.1	4,500 / 2.9
		2,450 / 4.7	2,560 / 5.2	2,700 / 5.4
		1,750 / 6.35	1,820 / 6.9	1,900 / 7.2
		1,400 / 8.0	1,420 / 8.5	1,500 / 9.0
Safety device	Outrigger check valve Rated fluid volume control valve Excessive load prevention port relief valve			
Options	ROTATOR & GRAPPLE (0.35m ³)	ROTATOR & GRAPPLE (0.35m ³ , 0.45m ³)	ROTATOR & GRAPPLE (0.35m ³ , 0.45m ³)	

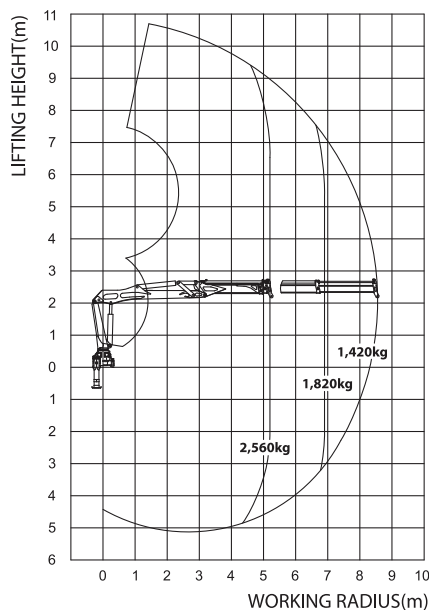
* Above specification could be changed without any notice depending on manufacturer's situation.
- Two tele-system Boom speed : Boom length / operation time of each cylinder. (simultaneous operation time)

WORKING RANGE DIAGRAM

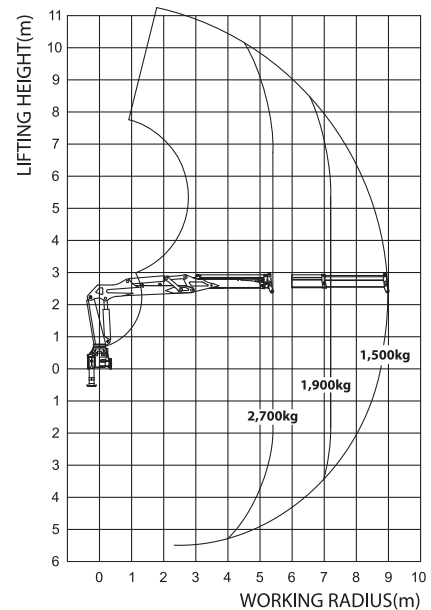
SSN2200II



SSN2800



SSN3000



Sales Office : (Namchon-dong), 36, Namdongseo-ro, 362beon-gil, Namdong-gu, Incheon, Korea
Plant : 118, Seogam-ro 13-gil, Iksan-si, Jeollabuk-do, Korea

◆ This product specification could be changed by DY Group without notice to improve the quality.